



£180,000

Beech Tree Avenue, Mansfield
Woodhouse, Mansfield,



Welcome to **BuckleyBrown**, where every home is carefully presented, so you can explore with clarity and confidence.

BuckleyBrown
ESTATE AGENTS

"This impressive residence has been carefully assessed and presents exceptionally well, offering a superb combination of space, quality, and modern living throughout."

Luke, Valuer



Style in abundance

From the moment you step inside, this beautifully presented three-bedroom semi-detached home impresses with its stylish, modern interiors and thoughtfully designed layout. Offering generous and versatile living space, it is perfectly suited to contemporary lifestyles. The property is further enhanced by a stunning rear garden, complete with a pergola and a superb outbuilding, creating an ideal space for relaxing, entertaining, or working from home.



Step Inside

A beautifully presented modern three-bedroom semi-detached home, situated in the popular area of Mansfield Woodhouse.

Finished to a high standard throughout, the property offers stylish and contemporary living, making it an ideal choice for families and professionals alike.

The ground floor accommodation comprises a welcoming entrance hall, a comfortable living room, and an impressive open-plan dining kitchen, perfectly designed for both everyday living and entertaining. A convenient downstairs WC completes the ground floor.

To the first floor, there are three well-proportioned bedrooms along with a modern family bathroom, all thoughtfully laid out to maximise space and comfort.

Externally, the property benefits from a driveway to the front providing off-street parking. To the rear, there is a beautifully maintained garden featuring wooden decking, a patio area with pergola, creating a fantastic outdoor space for relaxation and entertaining.





BuckleyBrown
ESTATE AGENTS







Life in Mansfield Woodhouse

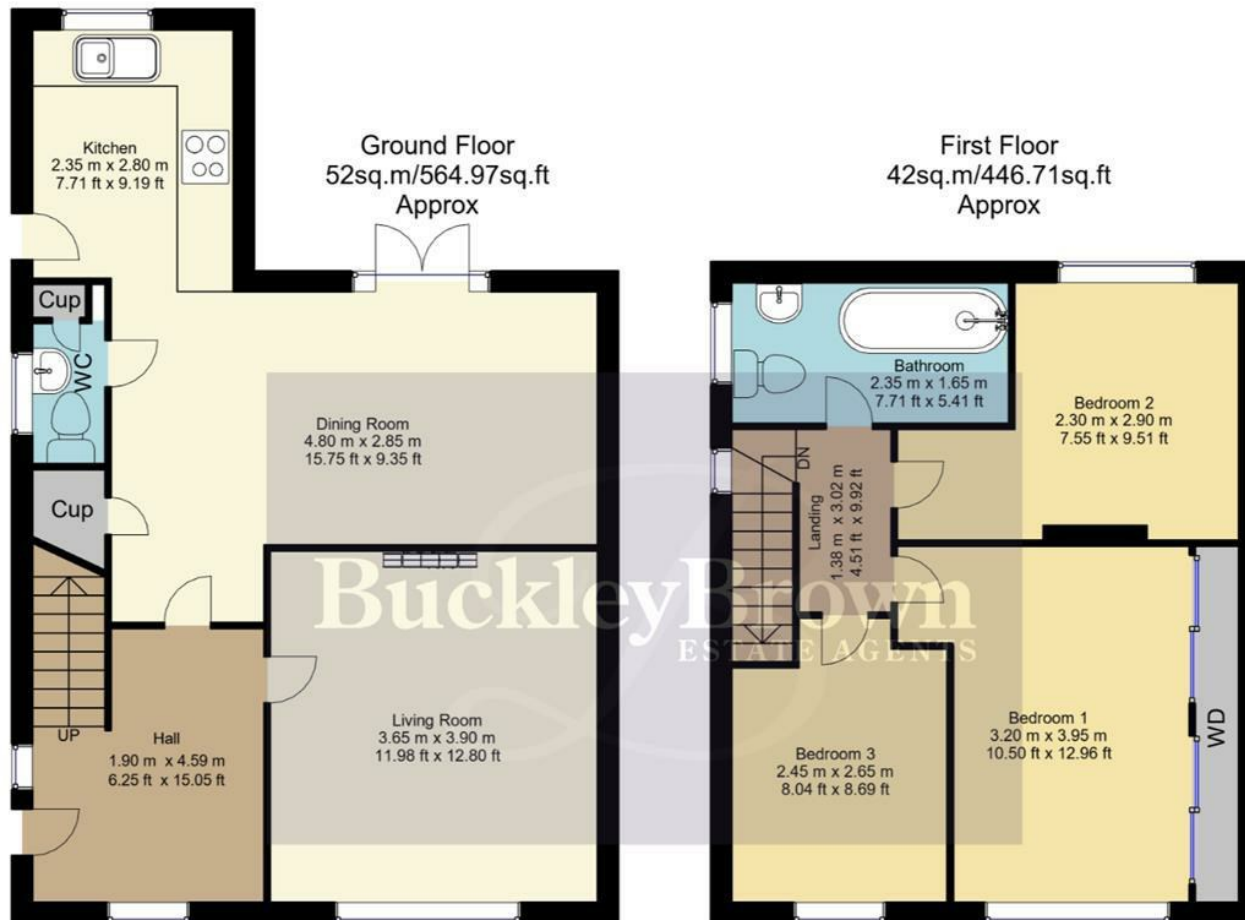
Mansfield Woodhouse is a popular and well-established suburb located to the north of Mansfield town centre, offering a pleasant residential setting with a strong sense of local character. Combining everyday convenience with access to green spaces, the area appeals to a wide range of buyers seeking a balance between town living and community atmosphere.

The area itself has a proud heritage and a welcoming feel, centred around its historic High Street and traditional market place. Residents benefit from a variety of local amenities, including independent shops, supermarkets, schools and healthcare facilities, along with a selection of cafés, pubs and community services. This well-served environment makes Mansfield Woodhouse particularly attractive to families, first-time buyers and those looking to remain within an established community.

Surrounded by attractive countryside and green spaces, Mansfield Woodhouse is well suited to those who enjoy outdoor living. Nearby parks, woodland areas and open countryside provide opportunities for walking, cycling and recreation, while the wider Sherwood Forest area is easily accessible for longer countryside outings.

Despite its residential feel, Mansfield Woodhouse remains well connected. The area benefits from its own railway station, offering convenient links to Mansfield, Nottingham and Worksop, while the nearby road network provides straightforward access to the A60, A38 and M1. This makes the location suitable for commuters travelling to Nottingham, Sheffield and surrounding areas.





Whilst every attempt has been made to ensure the accuracy of the floor plan contained here, no responsibility is taken for incorrect measurements of doors, windows, appliances and room or any error, omission or misstatement. Exterior and interior walls are drawn to scale based on interior measurements. Any figure given is for initial guidance only and should not be relied on as basis of valuation. These plans are for marketing purposes only and should be used as such by any prospective purchase. Specially no guarantee is should not be relied on as a basis of valuation. These plans are for marketing purposes only and should be used as such by any prospective purchase. Specifically no guarantee is given on the total square footage of the property if quoted on this plan.

These particulars are intended as a guide only and do not form part of any offer or contract. All descriptions, measurements, images and plans are provided for illustration purposes and should not be relied upon as statements of fact. Prospective purchasers should satisfy themselves as to the accuracy of the information. Buckley Brown Estate Agents accept no liability for any loss arising from reliance on these details.

© Buckley Brown Estate Agents 2026. All rights reserved.

Exceptional homes deserve
exceptional representation.

Let's Chat.

01623 633633

mansfield@buckleybrown.co.uk

buckleybrown.co.uk

BuckleyBrown
ESTATE AGENTS